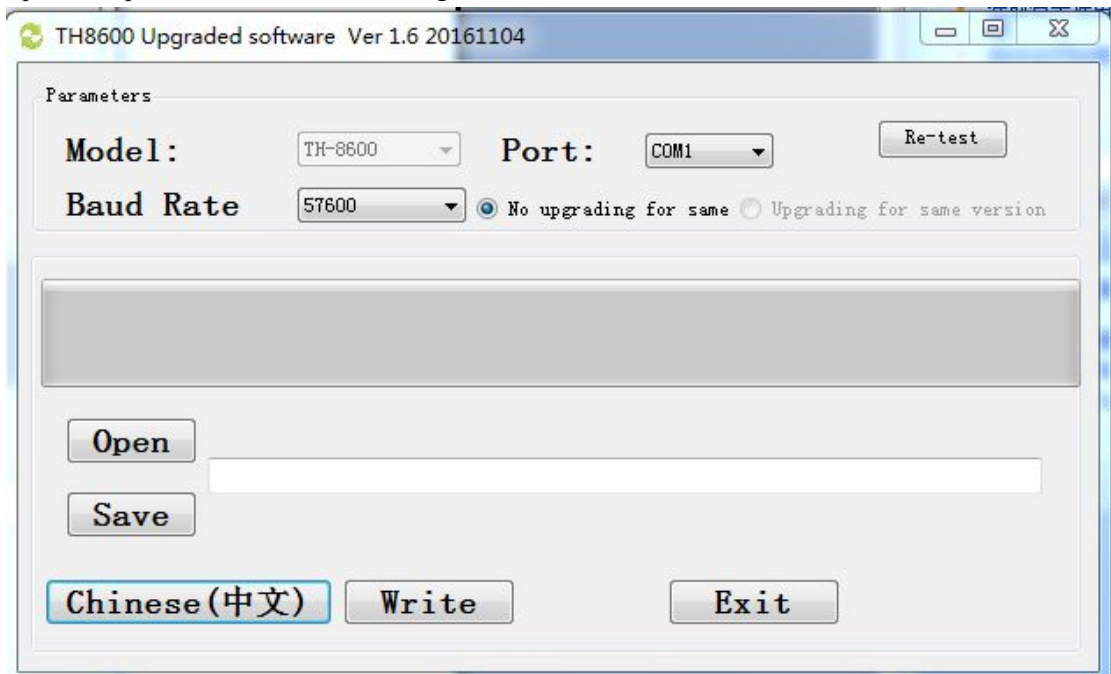


Updated Instruction:
Open the updated software as following:



1. press **Chinese (中文)** can select language.

2. Plug in the cable, choose right Com port

Port: COM1

3. Press **Open** and select the updated file.

4. Because we have two versions of TH-8600, previous TH-8600 is to turn off the radio, then press PTT and hold on to power on the radio again
And later TH-8600 is to disconnect the power supplier first, then press PTT and hold on, at the same time, connect power supplier again
And update mode is indicator flash twice, and display is blank

5. press **Write**, it will updated the radio/

Note: if try several time, updated failed.

1. try to change the **Baud Rate** 57600
change the Rate and try it again. (The lower Bps, the speed of updated will be more slow)
2. Cut off the power of radio, enter the updated mode again/